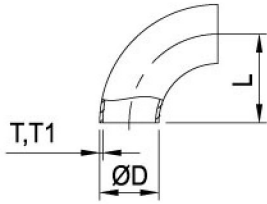


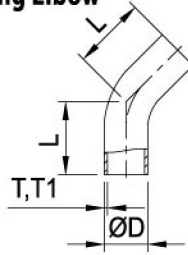
## 90° Short Elbow



### SMS 90 B 90° Short Elbow

DN	ØD	L	T	T1
25	25.0	37.5	1.25	1.5
38	38.0	57.0	1.25	1.5
51	51.0	76.5	1.25	1.5
63.5	63.5	95.25	1.5	1.5
76	76.1	114.15	1.6	2.0
104	104	152.1	2.0	2.0

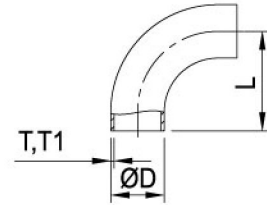
## 45° Long Elbow



### SMS 45 LB 45° Long Elbow

DN	ØD	L	T	T1
25	25.0	42.33	1.25	1.5
38	38.0	48.72	1.25	1.5
51	51.0	58.15	1.25	1.5
63.5	63.5	75.3	1.5	1.5
76	76.1	79.37	1.6	2.0
104	104	85.54	2.0	2.0

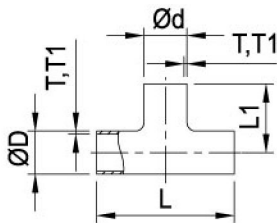
## 90° Long Elbow



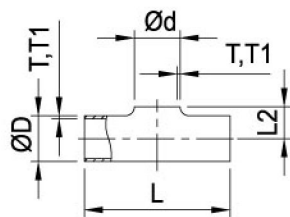
### SMS 90 LB 90° Long Elbow

DN	ØD	L	T	T1
25	25.0	55	1.25	1.5
38	38.0	70	1.25	1.5
51	51.0	82	1.25	1.5
63.5	63.5	105	1.5	1.5
76	76.0	110	1.6	2.0
101.6	101.6	150	2.0	2.0
104	104	150	2.0	2.0

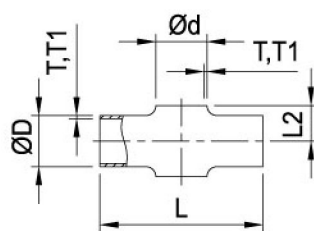
## SMS ET Tee With Straight-End



## SMS PT Tee Without Straight-End

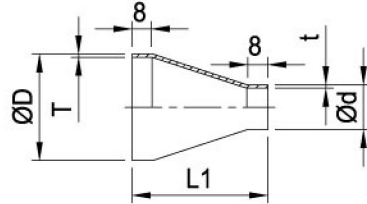


## SMS PC Welding Cross Without Straight-End

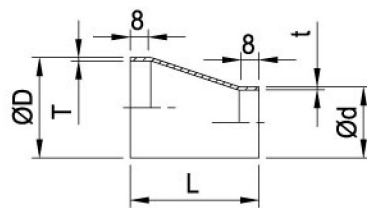


DN	ØD	Ød	T	T1	L	L1	L2
25	25.0	25.0	1.25	1.5	110	55	14.0
38	38.0	38.0	1.25	1.5	140	70	21.0
51	51.0	51.0	1.25	1.5	164	82	28.5
63.5	63.5	63.5	1.5	1.5	210	105	36.0
76.1	76.1	76.1	1.6	2.0	220	110	43.0
104	104	104	2.0	2.0	300	150	58.0

## SMS CR SMS Concentric Reducer

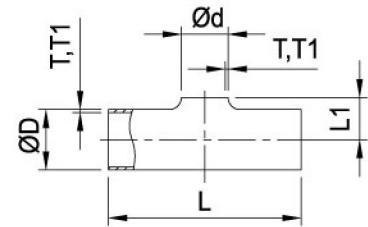


## SMS ER SMS Eccentric Reducer



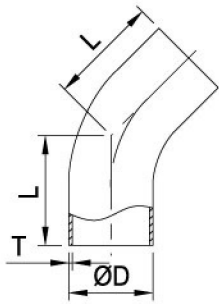
SIZE	ØD	Ød	T	t	L1	L
38x25	38.0	25.0	1.25	1.25	46	39
51x25	51.0	25.0	1.25	1.25	68	57
51x38	51.0	38.0	1.25	1.25	47	39
63.5x25	63.5	25.0	1.5	1.25	92	74
63.5x38	63.5	38.0	1.5	1.25	70	57
63.5x51	63.5	51.0	1.5	1.25	44	39
76x25	76.1	25.0	1.6	1.25	-	92
76x38	76.1	38.0	1.6	1.25	92	74
76x51	76.1	51.0	1.6	1.25	68	57
76x63.5	76.1	63.5	1.6	1.50	47	39
104x51	104	51.0	2.0	1.25	117	95
104x63.5	104	63.5	2.0	1.50	94	78
104x76	104	76.1	2.0	1.60	74	60

## SMS PRT Welding Reducing Tee Without Straight-End



DN	ØD	Ød	T	T1	L	L1
38x25	38.0	25.0	1.25	1.5	140	21.0
51x25	51.0	25.0	1.25	1.5	164	29.0
51x38	51.0	38.0	1.25	1.5	164	29.0
63.5x25	63.5	25.0	1.5	1.5	210	34.5
63.5x38	63.5	38.0	1.5	1.5	210	35.0
63.5x51	63.5	51.0	1.5	1.5	210	36.0
76.1x25	76.1	25.0	1.6	2.0	220	41.0
76.1x38	76.1	38.0	1.6	2.0	220	42.0
76.1x51	76.1	51.0	1.6	2.0	220	43.0
76.1x63.5	76.1	63.5	1.6	2.0	220	43.0
104x25	104	25.0	2.0	2.0	300	56.0
104x38	104	38.0	2.0	2.0	300	56.0
104x51	104	51.0	2.0	2.0	300	57.0
104x63.5	104	63.5	2.0	2.0	300	58.0
104x76.1	104	76.1	2.0	2.0	300	58.0

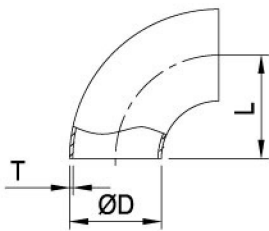
## DIN 45° Long Elbow



## DIN 45 LB

SIZE	ØD	L	T
DN25	28	20	1.5
DN32	34	23	1.5
DN40	40	20	1.5
DN50	52	27	1.5
DN65	70	30	2.0
DN80	85	33	2.0
DN100	104	40	2.0

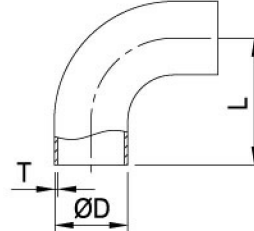
## DIN 90° Short Bend



## DIN 90 B

SIZE	ØD	L	T
DN20	22	40	1.5
DN25	28	50	1.5
DN32	34	55	1.5
DN40	40	60	1.5
DN50	52	70	1.5
DN65	70	80	2.0
DN80	85	90	2.0
DN100	101.6	152.4	2.0
DN100	104	100	2.0

## DIN 90° Long Bend

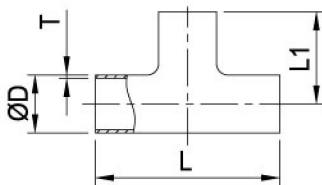


## DIN 90 LB

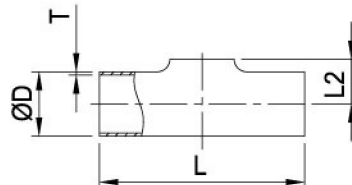
SIZE	ØD	L	T
DN25	28	70	1.5
DN32	34	78	1.5
DN40	40	85	1.5
DN50	52	97	1.5
DN65	70	110	2.0
DN80	85	118	2.0
DN100	101.6	150	2.0
DN100	104	140	2.0

## DIN Tee & Pull Tee

### DIN ET



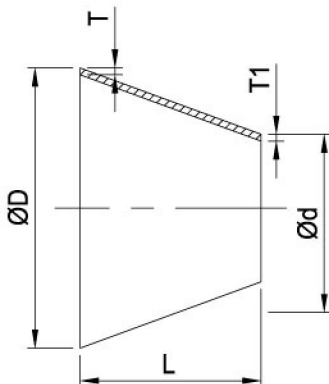
### DIN PT



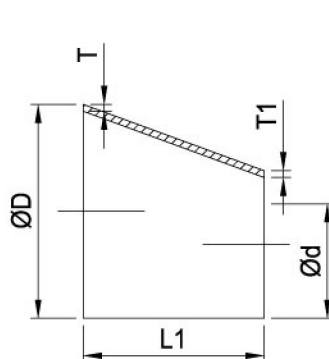
SIZE	ØD	L	L1	L2	T
DN20	22	94	47	13	1.5
DN25	28	100	50	15.5	1.5
DN32	34	110	55	19	1.5
DN40	40	120	60	22	1.5
DN50	52	140	70	28.5	1.5
DN65	70	160	80	39.5	2.0
DN80	85	180	90	46.5	2.0
DN100	101.6	300	150	56	2.0
DN100	104	200	100	58	2.0

## DIN Concentric Reducer

### DIN CR



### DIN ER



SIZE	ØD	Ød	T	L	L1	T1
32x25	34	28	1.5	25	16.5	1.5
40x25	40	28	1.5	23	33	1.5
40x32	40	34	1.5	23	16.5	1.5
50x25	52	28	1.5	27	66	1.5
50x32	52	34	1.5	28	49.5	1.5
50x40	52	40	1.5	27	33	1.5
65x25	70	28	1.5	35	75	1.5
65x40	70	40	2.0	39	77	1.5
65x50	70	52	2.0	29	44	1.5
80x50	85	52	2.0	45	85	1.5
80x65	85	70	2.0	33	41.2	2.0
100x50	104	52	2.0	50	137.5	1.5
100x65	104	70	2.0	44	93.5	2.0
100x80	104	85	2.0	60	52.5	2.0